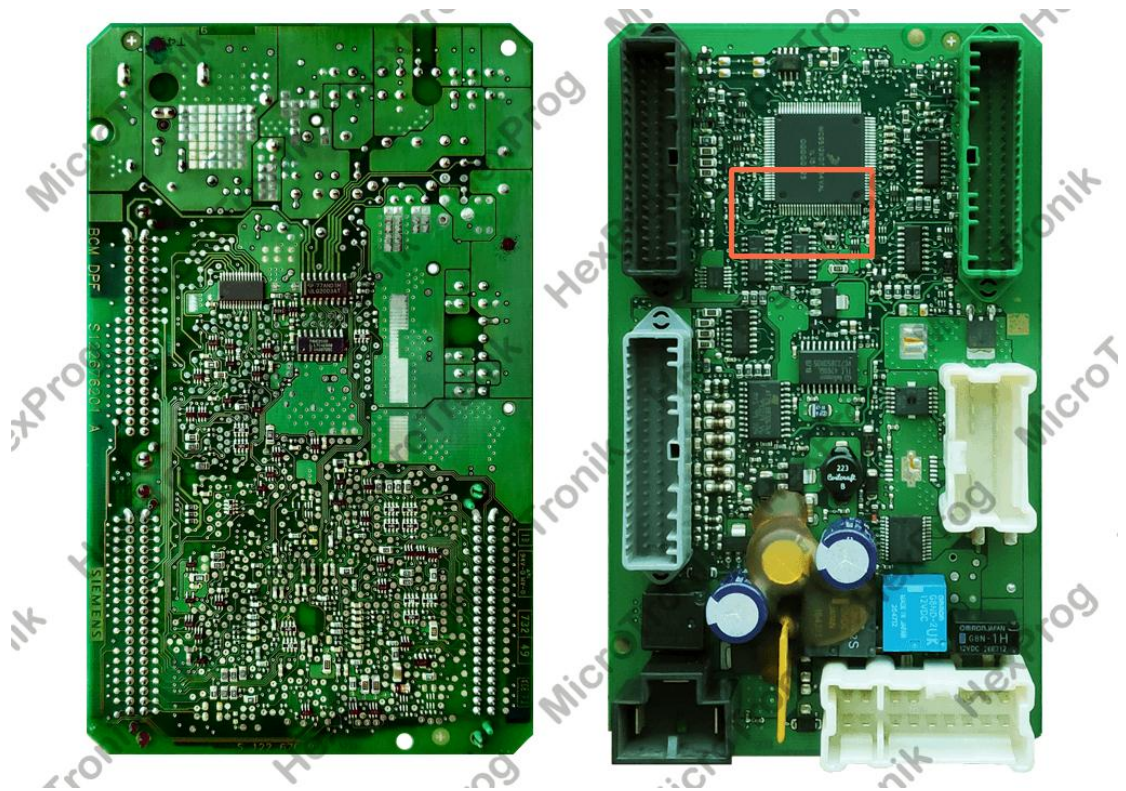


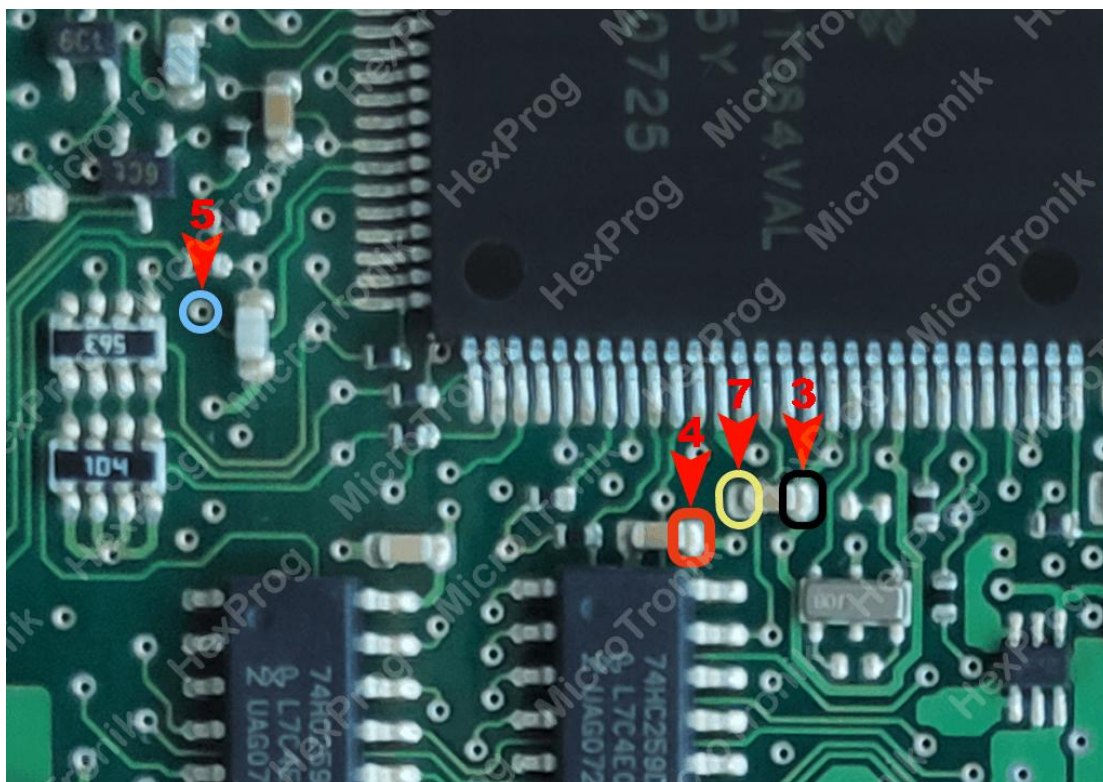
## Nissan/Renault BCM 0L15Y WIRING

1. Unplug BCM from the car (Careless Removal of the module may cause a damage to the car or the control itself, it must be carried under user's RISK)
2. Remove BCM board from the casing



Nissan BCM 0L15Y

3. Solder wires to BCM based on the below connection diagram using BDM cable



Nissan BCM 0L15Y Wiring

4. Select the BCM/CPU version from HexProg software
5. Do the desired function for read/write BCM in Software
6. Unsolder wires
7. Connect BCM back to car

